

National Pathology Programme Newsletter - July 2024

Welcome to our Newsletter!

The Newsletter is quarterly and keeps you updated with our recent work, achievements, and future plans.

In this edition:

- Good News Story - Successful and enjoyable day at a Welsh speaking Careers Fair
- Focus On: Digital Capability Framework
- Applications now open for the Moondance Cancer Initiative Keith James Grants
- Key Information: Southwest Wales Regional Update
- Save the Date: Pathology Conference South

Welcome to our new contacts...

The National Pathology Programme would like to share pathology related news, articles and events far and wide... A warm welcome to the new contacts that we have reached out to in this month's edition.

If you know any other colleagues that would be interested in subscribing to our quarterly newsletter, please ask them to contact us at:

NHSWHC.National.Pathology.Programmes@wales.nhs.uk

If you would like to be removed from this distribution list, please select the unsubscribe button at the bottom of this version of the newsletter or contact us via the email address above.

Programme Background

The National Pathology Programme is a strategic body in Wales sitting within the NHS Wales Executive, which is in turn hosted by Public Health Wales. Its remit is to work with Health Boards and Trusts across Wales to support the development of high quality, effective and sustainable pathology services. Priority areas for improvement that are the focus of the National Programme were originally identified in the *Pathology Statement of Intent (2019)* and current work is aligned with the *Diagnostics Recovery and Transformation Strategy for Wales (2023 – 2025)*.

Updates on the key areas of our work

Workforce, Training and Education

The National Pathology Programme continues to work closely with Health Education and Improvement Wales (HEIW), National Pathology Workforce and Education Group and National Training Leads to deliver the relevant elements of the Diagnostics Workforce Strategy which was released earlier this year.

We are also working with a variety of stakeholders to support the development of a phased implementation plan to deliver a National Pathology Training Academy for Wales. The Practice Education Facilitator (PEF) pilot project is due to publish a recommendation paper outlining the benefits of these roles and some specific areas where they can add real value in the training and development of scientific and laboratory support staff in particular.

The other National Pathology Programme pilot project, Limited Scope Biomedical Scientist Bowel Screening Reporting, has commenced at Cardiff and Vale University Health Board and is progressing well. The National Programme is working to gain National approval for the job description associated with this role and also will start soon to develop a National

Business Case to seek funding and adoption across the system assuming the outcome of the pilot demonstrates benefit and value.

Quality Assurance

The Pathology Quality and Regulatory Compliance Group (PQARCG) continues to act as a forum for sharing best practice and experience between Pathology services. This includes sharing learning and experiences from UKAS assessments, and also regulatory compliance inspections by the MHRA and HTA. Work is now in progress with respect to the transition to ISO 15189:2022 to facilitate shared learning, sharing of best practise and consideration of standardisation where possible. PQARCG is also continuing to monitor the changes to the medical device and IVDR regulations and any impact on pathology, as well as working on developing a quality and performance dashboard for the service.

Point of Care Testing

With the approval of the National Point of Care Testing (POCT) Strategy by the National Diagnostic Board, a more formal National POCT Strategy Board was recently established to support the planning, implementation, and delivery of POCT services. This work is underpinned by the POCT Delivery Group and the ongoing workstreams, which includes: a review of National POCT governance policy, developing specifications for a Digital Integration Platform for POCT that aligns with the “diagnostic anywhere” approach, establishing national procurement frameworks, developing national e-learning modules, and reviewing professional career pathways to ensure workforce models are sustainable for our future needs.

Business Intelligence

NHS Wales Executive is in the process of establishing an informatics team which will provide support for National Programmes and Networks in data acquisition to better inform decision making. The National Pathology Programme is currently working on obtaining accurate, real-time demand and capacity data for all services and continues to develop a service quality assurance dashboard in collaboration with Health Boards

Digital Cellular Pathology

The National Pathology Programme are delighted to report that the Business Justification Case for the National Digital Cellular Pathology Project was shared with all Health Boards in May, with an ask to share internally and escalate for approval as appropriate. The National Digital Cellular Pathology Project Group are continuing to develop a specification for procurement and have two working groups to ensure both IT and clinical elements of the specification are covered in detail.

Communication

As part of the Communication and Engagement workstream we have been updating the programme's webpages. We relaunched the webpages to our new contacts list of around 2,800 colleagues in the Pathology field in Wales. The feedback so far has been very positive, we look forward to working closely with colleagues to continue to improve the information that we have available for patients, students, colleagues and managers. If you have not had chance to have a look at our pages yet, please visit here: [National Pathology Programme - NHS Wales Executive](#), if you would like to work with us to support the content on the pages, please contact us at: NHSWHC.National.Pathology.Programmes@wales.nhs.uk; we would be happy to receive your feedback.

Work continues with our vision of allowing others to ‘see behind closed doors’ in our labs. We are aiming to produce further videos in our Welsh labs, highlighting the important work that is happening in Wales to support healthcare. We are also planning more visits to take ‘real life’ photos and showcase the individual labs. If you are happy for us to visit your lab, or if you have a particular good news story you would like to tell us, please get in touch at the above email address; we would love to help inform others of the work that you are doing.

Patient engagement is another priority area for us in the programme. Work has begun to establish how we engage with patients when the majority of pathology work is not patient facing. Working collaboratively with the other diagnostic programmes, including Genomics, Endoscopy & Imaging, we hope to begin a new project very soon to support patient

voices.

Pathology Service Collaboration/Regionalisation

Representatives from the three Health Boards in the Southeast region met recently to conduct a non-financial Options Appraisal. The final results of this are still to come.

National Pathology Equipment Register Project

The main aim of this project is to implement a system that can provide a prioritised pathology equipment list for Welsh Government if funding is ever available at short notice. Also, holding a Pathology Equipment register will provide the Programme with more visibility of equipment in use across Wales. The project is beginning with the collection of equipment information for Cellular Pathology before being rolled out to the rest of the disciplines within Pathology.

Environmental Sustainability

Following the publication of the report [Addressing Single-Use Plastic and Waste in Public Health Wales' Microbiology Labs](#) by Public Health Wales and Revolution-Zero, the Programme has established a working link with its Health and Sustainability Hub and Hywel Dda University Health Board. Meetings are being held regularly with the intention of exploring similar initiatives in the pathology service. If you are aware of any sustainability initiatives taking place in your organisation, are involved in any initiatives, or have an interest in this area, please contact Kim.Williams5@wales.nhs.uk.

Good News Story

Successful and enjoyable day at a Welsh speaking Careers Fair

On 12th June Careers Wales invited the National Pathology Programme to participate in a Careers Fair at Ysgol Gyfun Llanhari. Representing our team were Lisa McCutcheon, our Communications and Engagement Project Manager, and Mark Henry, Cwm Taf Morgannwg's Biochemistry, PoCT & Immunology Service Manager. Both Lisa and Mark, as Welsh speakers, had the opportunity to engage with Year 10 and Year 12 students, discussing the vital role pathologists play in healthcare.

The students showed great interest in the 'behind the scenes' work involved in patient diagnosis. Despite the smaller size of the Year 12 group, many students were eager to learn. Mark shared his journey from his A-level grades to becoming a biomedical scientist and eventually advancing to his current managerial position.

We extend our thanks to Mark for dedicating his time to inspire students despite his demanding workload. Such engagement sessions are crucial for nurturing the next generation of pathology professionals in Wales.

If you are interested in attending future career events or are already involved with schools, colleges, and other partners, we would love to hear from you. Please get in touch with us if you would like us to showcase your work in our next newsletter.

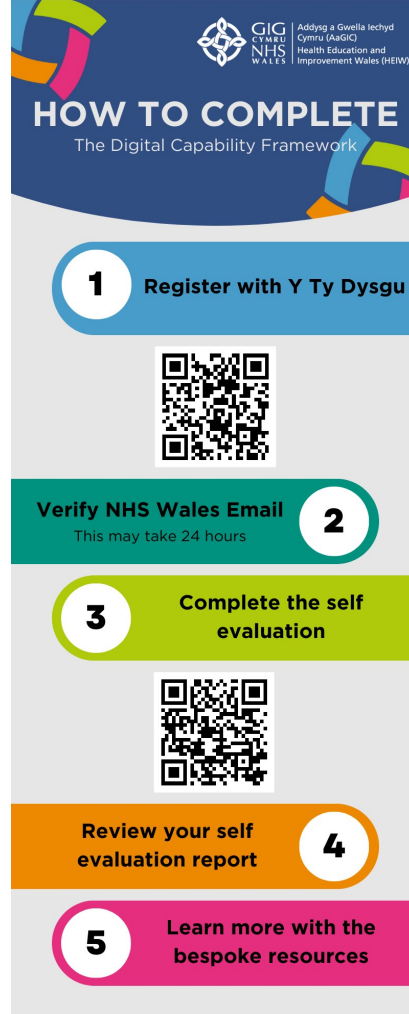


Welsh Government Funding for the National Pathology Programme

The National Pathology Programme has recently secured approximately £2.5 million from the Welsh Government through two transformation fund bids. This funding aims to support pre-analytical processes in advancing Precision Medicine delivery and to further enhance the adoption of Digital Cellular Pathology throughout Wales. Moving forward, the Programme will engage with relevant Departmental Leads to allocate these funds to Health Boards. Over the next 18 months, the funds will be utilised as work continues on the development of a National framework for Precision Medicine pathway funding and on the approval of the National Digital Cellular Pathology Business Case by Health Boards.

Focus On

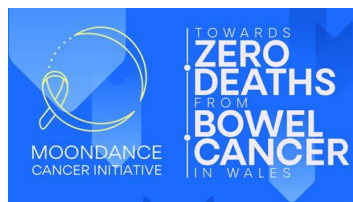
Digital Capability Framework



Digital skills are an essential component in the updated HCPC standards of practice, and to support staff with improving their digital skills HEIW have developed a Digital Capability Framework. The framework is an interactive self-evaluation tool for use by individuals and teams to better understand their digital capabilities and how to develop these further. For more details and to access the framework via Y Ty Dysgu, please click on the link below:

[Click here to read the full article](#)

Moondance Cancer Initiative Keith James Grants



Applications are now open to access support for NHS Wales professionals working in cancer services to access learning and development opportunities, with a total of £1 million being made available. For further details and to submit an application, please click on the link below:

[Click here to read the full article](#)

Call for papers about advances in RNA therapeutics and diagnostics

The British Journal of Biomedical Science is looking for submissions of papers focused on advances in RNA therapeutics and diagnostics for a special issue to be released later this year. They are welcoming original research papers, reviews, mini-reviews and brief articles on this topic. The deadline for submissions is 29th November 2024. For more information click the link below:

[Click here to read the full article](#)

Key Information

South West Wales Regional Update

Please click on the link below to read about the latest developments in the South West Wales Regional Pathology Programme:

[Click to view the latest update](#)

Save The Date

[The Pathology Conference South: Improving NHS Diagnostics - Wednesday 25th September \(Hatfields Conference Centre, London\)](#)

The conference is to take place at Hatfields Conference Centre, London, with speakers to include IBMS Chief Executive David Wells and Managing Director of Northwest London Pathology Sagar Missaghian-Cully. For further details and registry, click here:

[Click here for the event website](#)

Upcoming Pathology Events

[International Pathology Day 2024 - Wednesday 6th November \(Online Event\)](#)

Join the Royal College of Pathologists online for their annual conference to mark International Pathology Day. This year's theme: The Rise of Global Antimicrobial Resistance (AMR). To book your place on this one day virtual conference, click here:

[Click here for the event website](#)

Pathology colleagues will be in attendance at this year's Eisteddfod hosting a stall at the festival. For further information on the festival, including tickets and even schedule, please click on the link below:

[Click here for the event website](#)

The Programme team

Alan Deacon	National Pathology Programme Lead
Adam Christian	National Pathology Programme Clinical Lead
Caity Thomas	Senior Project Manager, Digital Cellular Pathology.
Kim Williams	Senior Project Manager
Jane Long	Project Manager, Pathology Workforce, Training and Education.
Tahir Mohammed	Pathology Practice Education Facilitator
Lauren O’Gorman	Business Intelligence
Leanne Barker	Senior Project Support Officer
Joanne Everett	Senior Project Support Officer

Goodbye and Best Wishes to Lisa McCutcheon

On 11th July the National Pathology Programme said a sad goodbye to Lisa McCutcheon who left her role with us as Project Manager to take on a position with Bowel Screening Wales. We wish Lisa all the best in her new job and offer our heartfelt thanks for all the hard work she has put into transforming the communications element of the programme.

Contact us

Please email NHSWHC.National.Pathology.Programmes@wales.nhs.uk if you would like:

- to be added to the circulation list for our newsletter
- to provide feedback or contributions
- opportunities to engage with the work of the Programme

Next edition – October 2024



Cylchlythyr y Rhaglen Batholeg Genedlaethol – Gorffennaf 2024

Croeso i'n Cylchlythyr!

Cylchlythyr chwarterol yw hwn ac mae'n rhoi ichi'r newyddion diweddaraf am ein gwaith diweddar, ein cyflawniadau, a'n cynlluniau i'r dyfodol.

Yn y rhifyn hwn:

- Stori Newyddion Da – Diwrnod llwyddiannus a phleserus mewn Ffair Yrfaoedd Iaith Gymraeg
- Ffocws ar: Fframwaith Galluogrwydd Digidol
- Mae ceisiadau nawr ar agor ar gyfer Grantiau Keith James Menter Canser Moondance
- Gwybodaeth Allweddol: Diweddariad ar Rhanbarthol De Orllewing Cymru
- Cadwch y Diddiad: Cynhadledd Patholeg y De

Croeso i'n cysylltiadau newydd...

Hoffwn y Rhaglen Patholeg Genedlaethol rannu newyddion, erthyglau a digwyddiadau sy'n ymwneud â phatholeg ymhell ac agos... Croeso cynnes i'r cysylltiadau newydd sydd yn darllen rhifyn y mis hwn.

Os ydych yn adnabod unrhyw gydweithwyr eraill fydd â diddordeb o ddarllen ein cylchlythyr chwarterol, gofynnwch iddynt gysylltu â ni trwy:

NHSWHC.National.Pathology.Programmes@wales.nhs.uk

Os dydych chi ddim eisiau bod ar y rhestr ddosbarthu hon, cliciwch y botwm datdanysgrifio ar waelod fersiwn hon o'r cylchlythyr neu cysylltwch â ni drwy'r e-bost uchod.

Cefndir y Rhaglen:

Corff strategol yng Nghymru a saif o fewn Gweithrediaeth GIG Cymru, ac a gynhelir yn ei thro gan lechyd Cyhoeddus Cymru, yw'r Rhaglen Batholeg Genedlaethol. Ei chylch gorchwyl yw gweithio gyda byrddau iechyd ac ymddiriedolaethau ar draws Cymru i gefnogi datblygiad gwasanaethau patholeg cynaliadwy, effeithiol ac o ansawdd. Cafodd y meysydd sydd i'w gwella fel blaenoriaeth sy'n ganolog i'r Rhaglen Genedlaethol eu nodi'n wreiddiol yn y Datganiad o Fwriad Patholeg (2019) ac mae'r gwaith presennol yn gydnaws â'r ddogfen *Strategaeth Adfer a Thrawsnewid Diagnosteg yng Nghymru (2022 – 2025)*.

Diweddariadau ar feysydd allweddol ein gwaith:

Gweithlu, Hyfforddiant ac Addysg

Mae'r Rhaglen Patholeg Genedlaethol yn parhau i weithio'n agos gydag Addysg a Gwella lechyd Cymru (AaGIC), y Grŵp Gweithlu ac Addysg Patholeg, ac Arweinwyr Hyfforddiant Cenedlaethol i gyflawni elfennau perthnasol y Strategaeth Gweithlu Diagnosteg a ryddhawyd yn gynharach eleni.

Rydym hefyd yn gweithio gydag amrywiaeth o randdeiliaid i gefnogi datblygiad cynllun gweithredu graddol i gyflwyno Academi Hyfforddiant Patholeg Genedlaethol i Gymru.

Mae'r prosiect peilot Hwylusydd Addysg Ymarfer (PEF) ar fin cyhoeddi papur argymhellion yn amlinellu manteision y rolau hyn a rhai meysydd penodol lle gallant ychwanegu gwerth gwirioneddol o ran hyfforddi a datblygu staff cymorth gwyddonol a labordy yn benodol.

Mae prosiect peilot arall y Rhaglen Patholeg Genedlaethol, sef Adroddiadau BMS Cwmpas Cyfyngedig i gefnogi Rhaglen Sgrinio Coluddion Cymru, wedi dechrau ym Mwrdd lechyd Prifysgol Caerdydd a'r Fro ac yn mynd rhagddo'n dda. Mae'r Rhaglen Genedlaethol yn gweithio i gael cymeradwyaeth Genedlaethol ar gyfer y swydd-ddisgrifiad sy'n gysylltiedig â'r swydd hon. Bydd hefyd yn dechrau datblygu Achos Busnes Cenedlaethol yn fuan i geisio cyllid a mabwysiadu ar draws y system gan dybio bod canlyniad y peilot yn dangos budd a gwerth.

Sicrhau Ansawdd

Mae'r Grŵp Ansawdd Patholeg a Chydymffurfiaeth Reoleiddiol (PQARCG) yn parhau i weithredu fel fforwm ar gyfer rhannu arferion gorau a phrofiad rhwng gwasanaethau

Patholeg. Mae hyn yn cynnwys rhannu'r hyn a ddysgwyd a phrofiadau o asesiadau Gwasanaeth Achredu'r Deyrnas Unedig (UKAS), a hefyd arolygiadau cydymffurfiaeth reoleiddiol gan yr Asiantaeth Rheoleiddio Meddyginiaethau a Chynhyrchion Gofal Iechyd (MHRA) a'r Awdurdod Meinweoedd Dynol (HTA). Mae gwaith yn mynd rhagddo ar hyn o bryd o ran trosglwyddo i ISO 15189:2022 i hwyluso dysgu ar y cyd, rhannu arferion gorau ac ystyried safoni lle bo modd. Mae PQARCG hefyd yn parhau i fonitro'r newidiadau i'r rheoliadau dyfeisiau meddygol ac IVDR ac unrhyw effaith ar batholeg, yn ogystal â gweithio ar ddatblygu dangosfwrdd ansawdd a pherfformiad ar gyfer y gwasanaeth.

Profi yn y Pwynt Gofal

Gyda chymeradwyaeth y Strategaeth Profion Pwynt Gofal Cenedlaethol (POCT) gan y Bwrdd Diagnostig Cenedlaethol, sefydlwyd Bwrdd Strategaeth POCT Cenedlaethol mwy ffurfiol yn ddiweddar i gefnogi cynllunio, gweithredu a darparu gwasanaethau POCT. Mae'r gwaith hwn wedi'i ategu gan y Grŵp Cyflawni POCT a'r ffrydiau gwaith parhaus, sy'n cynnwys: adolygiad o bolisi llywodraethu POCT Cenedlaethol, datblygu manylebau ar gyfer Llwyfan Integreiddio Digidol ar gyfer POCT sy'n cyd-fynd â'r dull "diagnostig yn unrhyw le", sefydlu fframweithiau caffael cenedlaethol, datblygu modiwlau e-ddysgu cenedlaethol, ac adolygu llwybrau gyrfa proffesiynol i sicrhau bod modelau gweithlu yn gynaliadwy ar gyfer ein hanghenion yn y dyfodol.

Deallusrwydd busnes

Mae Gweithrediaeth GIG Cymru yn y broses o sefydlu tîm gwybodeg a fydd yn rhoi cymorth i Raglenni a Rhwydweithiau Cenedlaethol o ran caffael data er mwyn llywio penderfyniadau yn well. Mae'r Rhaglen Batholeg Cenedlaethol wrthi'n gweithio ar gael data cywir, amser real ar y galw a'r capasiti ar gyfer yr holl wasanaethau. Mae'n parhau i ddatblygu dangosfwrdd sicrhau ansawdd gwasanaethau mewn cydweithrediad â Byrddau Iechyd.

Patholeg Gellog Ddigidol

Mae'n bleser gan y Rhaglen Batholeg Cenedlaethol ddatgan bod yr Achos Cyfiawnhad Busnes ar gyfer y Prosiect Patholeg Cellog Digidol Cenedlaethol wedi'i rannu â'r holl Fyrddau Iechyd ym mis Mai, gyda chais i'w rannu'n fewnol a'i uwchgyfeirio i'w gymeradwyo fel y bo'n briodol. Mae'r Grŵp Prosiect Patholeg Cellog Digidol Cenedlaethol yn parhau i ddatblygu manyleb ar gyfer caffael ac mae ganddo ddau weithgor i sicrhau bod elfennau TG a chlinigol y fanyleb yn cael eu cynnwys yn fanwl.

Cyfathrebu

Fel rhan o'r ffrwd waith Cyfathrebu ac Ymgysylltu, rydym wedi bod yn diweddarau tudalennau gwe'r rhaglenni. Ail-lansiwyd y tudalennau gwe i'n rhestr cysylltiadau newydd sy'n cynnwys tua 2,800 o gydweithwyr yn y maes patholeg yng Nghymru. Mae'r adborth hyd yn hyn wedi bod yn gadarnhaol iawn. Rydym yn edrych ymlaen at weithio'n agos gyda chydweithwyr i barhau i wella'r wybodaeth sydd ar gael i gleifion, myfyrwyr, cydweithwyr a rheolwyr. Os nad ydych wedi cael cyfle i edrych ar ein tudalennau eto, edrychwch yma: [Rhaglen Patholeg Cenedlaethol - Gweithrediaeth GIG Cymru](#), os hoffech weithio gyda ni i gefnogi'r cynnwys ar y tudalennau, cysylltwch â ni gan ddefnyddio: NHSWHC.National.Pathology.Programmes@wales.nhs.uk, byddem yn hapus i dderbyn eich adborth.

Mae gwaith yn parhau gyda'n gweledigaeth o ganiatáu i eraill 'weld tu ôl i'r llenni' yn ein labordai. Ein nod yw cynhyrchu rhagor o fideos yn ein labordai yng Nghymru, gan dynnu sylw at y gwaith pwysig sy'n digwydd yng Nghymru i gefnogi gofal iechyd. Rydym hefyd yn cynllunio rhagor o ymweliadau i dynnu lluniau 'bywyd go iawn' ac arddangos y labordai unigol. Os ydych chi'n hapus i ni ymweld â'ch labordy, neu os oes gennych chi stori newyddion arbennig yr hoffech chi ei hadrodd i ni, cysylltwch â ni gan ddefnyddio'r cyfeiriad e-bost uchod; byddem wrth ein bodd yn helpu i hysbysu eraill am y gwaith yr ydych yn ei wneud.

Mae ymgysylltu â chleifion yn faes blaenoriaeth arall i ni yn y rhaglen. Mae gwaith wedi dechrau i sefydlu sut rydym yn ymgysylltu â chleifion pan nad yw'r rhan fwyaf o'r gwaith patholeg yn ymwneud â chleifion. Gan weithio ar y cyd â rhaglen ddiagnostig arall gan gynnwys Genomeg, Endosgopi a Delweddu, rydym yn gobeithio dechrau prosiect newydd yn fuan iawn i gefnogi lleisiau cleifion.

Rhanbartholi/Cydweithrediad y Gwasanaeth Patholeg

Cyfarfu cynrychiolwyr o'r tri Bwrdd Iechyd yn rhanbarth y De-ddwyrain yn ddiweddar i

gynnal Arfarniad Opsiynau anariannol. Mae canlyniadau terfynol hyn eto i ddod.

Prosiect Cofrestr Offer Patholeg Genedlaethol

Prif nod y prosiect hwn yw gweithredu system a all ddarparu rhestr offer patholeg wedi'i blaenoriaethu ar gyfer Llywodraeth Cymru os bydd cyllid byth ar gael ar fyr rybudd. Hefyd, bydd cadw cofrestr Offer Patholeg yn rhoi mwy o amlygrwydd i'r Rhaglen o'r offer a ddefnyddir ledled Cymru. Mae'r prosiect yn dechrau gyda chasglu gwybodaeth am offer ar gyfer Patholeg Gelllog yn unig cyn cael ei gyflwyno i weddill y disgyblaethau.

Yr amgylchedd

Yn dilyn cyhoeddi'r adroddiad [Mynd i'r Afael â Phlastig Untro a Gwastraff yn Labordai Microbioleg Iechyd Cyhoeddus Cymru](#) gan Iechyd Cyhoeddus Cymru a Revolution-Zero, mae'r Rhaglen wedi sefydlu cyswllt gwaith â'i Hwb Iechyd a Chynaliadwyedd a Bwrdd Iechyd Prifysgol Hywel Dda. Mae cyfarfodydd yn cael eu cynnal yn rheolaidd gyda'r bwriad o archwilio mentrau tebyg yn y gwasanaeth patholeg. Os ydych yn ymwybodol o unrhyw fentrau cynaliadwyedd sy'n digwydd yn eich sefydliad, os ydych yn ymwneud ag unrhyw fentrau, neu os oes gennych ddiddordeb yn y maes hwn, cysylltwch â Kim.Williams5@wales.nhs.uk.

Stori Newyddion Da

Diwrnod llwyddiannus a phleserus mewn Ffair Yrfaeodded laith Gymraeg

Ar y 12 o Fehefin, gwahoddodd Gyrfa Cymru y Rhaglen Patholeg Genedlaethol i gymryd rhan mewn Ffair Yrfaeodded yn Ysgol Gyfun Llanhari. Yn cynrychioli ein tîm roedd Lisa McCutcheon, ein Rheolwr Prosiect Cyfathrebu ac Ymgysylltu, a Mark Henry, Rheolwr Gwasanaeth Biocemeg, Profion Pwynt Gofal ac Imiwnoleg Cwm Taf Morgannwg. Cafodd Lisa a Mark, fel siaradwyr Gymraeg, y cyfle i ymgysylltu â myfyrwyr Blwyddyn 10 a Blwyddyn 12, gan drafod y rôl hanfodol y mae patholegwyr yn ei chwarae mewn gofal iechyd.

Dangosodd y myfyrwyr ddiddordeb mawr yn y gwaith 'tu ôl i'r llenni' sy'n ymwneud â diagnosis cleifion. Er gwaethaf y nifer fach o fyfyrwyr yng ngrŵp Blwyddyn 12, roedd llawer o fyfyrwyr yn awyddus i ddysgu. Rhannodd Mark ei daith o'i raddau Lefel A i ddod yn wyddonydd biofeddygol ac yn y pen draw symud ymlaen i'w swydd reoli bresennol.

Hoffem ddiolch i Mark am neilltuo ei amser i ysbrydoli myfyrwyr er gwaethaf ei lwyth gwaith caled. Mae sesiynau ymgysylltu o'r fath yn hanfodol ar gyfer meithrin y genhedlaeth nesaf o weithwyr proffesiynol patholeg yng Nghymru.

Os oes gennych ddiddordeb mewn ymuno â digwyddiadau gyrfa yn y dyfodol neu os ydych eisoes yn ymwneud ag ysgolion, colegau, a phartneriaid eraill, byddem wrth ein bodd yn clywed gennych. Cysylltwch â ni os hoffech i ni arddangos eich gwaith yn ein cylchlythyr nesaf.

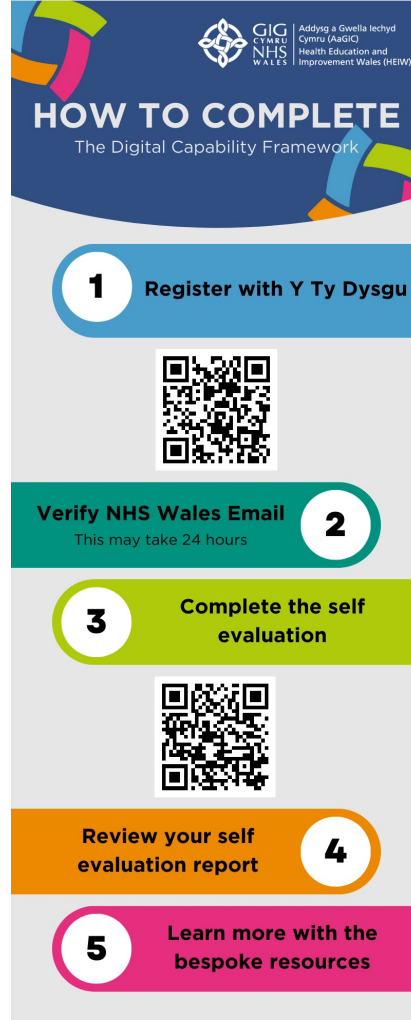


Cyllid Llywodraeth Cymru ar gyfer y Rhaglen Batholeg Genedlaethol

Yn ddiweddar, mae'r Rhaglen Batholeg Genedlaethol wedi sicrhau tua £2.5 miliwn gan Lywodraeth Cymru drwy ddau gais cronfa drawsnewid. Nod y cyllid hwn yw cefnogi prosesau cyn y cam dadansoddi wrth ddatblygu darpariaeth Meddygaeth Fanwl a gwella ymhellach y broses o fabwysiadu Patholeg Gellog Ddigidol ledled Cymru. Wrth symud ymlaen, bydd y Rhaglen yn ymgysylltu ag Arweinwyr Adrannol perthnasol i ddyrannu'r cyllid hwn i Fyrddau Iechyd. Dros y 18 mis nesaf, bydd y cyllid yn cael ei ddefnyddio wrth i waith barhau ar ddatblygu fframwaith cenedlaethol ar gyfer ariannu llwybr Meddygaeth Fanwl ac ar gymeradwyo Achos Busnes Patholeg Gellog Ddigidol Genedlaethol gan Fyrddau Iechyd.

Ffocws ar

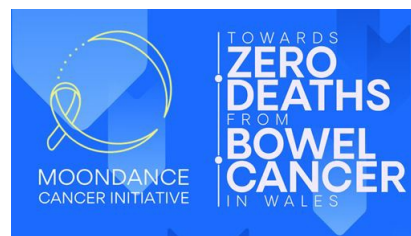
Fframwaith Galluogrwydd Digidol



Mae sgiliau digidol yn rhan hanfodol o safonau ymarfer diweddaraf Y Cyngor Proffesiynau Gofal ac Iechyd (HCPC), ac i gefnogi staff i wella eu sgiliau digidol mae Addysg a Gwella Iechyd Cymru (AaGIC) wedi datblygu Fframwaith Galluogrwydd Digidol. Offeryn hunanwerthuso rhyngweithiol yw'r fframwaith i'w ddefnyddio gan unigolion a thimau i ddeall eu galluoedd digidol yn well a sut i ddatblygu'r rhain ymhellach. I gael rhagor o fanylion ac i gael mynediad at y fframwaith drwy'r Tŷ Dysgu, cliciwch ar y ddolen isod:

[Cliciwch yma i ddarllen yr erthygl llawn](#)

Grantiau Keith James Menter Cancer Moondance



Mae ceisiadau bellach ar agor i gael mynediad at gymorth i weithwyr proffesiynol GIG Cymru sy'n gweithio mewn gwasanaethau cancer i gael mynediad at gyfleoedd dysgu a datblygu, ac mae cyfanswm o £1 miliwn ar gael. I gael rhagor o fanylion ac i gyflwyno cais, cliciwch ar y ddolen isod:

[Cliciwch yma i ddarllen yr erthygl](#)

Galwad am bapurau am ddatblygiadau mewn therapiwteg a diagnosteg RNA

Mae'r British Journal of Biomedical Science yn chwilio am gyflwyniadau o bapurau sy'n canolbwyntio ar ddatblygiadau mewn therapiwteg RNA a diagnosteg ar gyfer rhifyn arbennig i'w rhyddhau yn ddiweddarach eleni. Maent yn croesawu papurau ymchwil gwreiddiol, adolygiadau, adolygiadau bach ac erthyglau byr ar y pwnc hwn. Y dyddiad cau ar gyfer cyflwyniadau yw 29 Tachwedd 2024. Am fwy o wybodaeth cliciwch ar y ddolen isod:

[Cliciwch yma i ddarllen yr erthygl llawn](#)

Gwybodaeth Allweddol

Diweddariad ar Rhanbarthol De Orllewin Cymru

Cliciwch ar y ddolen isod i ddarllen am y datblygiadau diweddaraf yn Rhaglen Patholeg Ranbarthol Dde-orllewin Cymru:

[Cliciwch yma i ddarllen yr erthygl llawn](#)

Cadwch y Dyddiad

Cynhadledd Patholeg y De: Gwella Diagnosteg y GIG - Ddydd Mercher 25 Medi

Cynhelir y gynhadledd yng Nghanolfan Gynadledda Hatfields, Llundain, a bydd y siaradwyr yn cynnwys Prif Weithredwr IBMS David Wells a Rheolwr Gyfarwyddwr Patholeg Gogledd Orllewin Llundain Sagar Missaghian-Cully. Am fanylion pellach ac i gofrestru, cliciwch yma:

[Cliciwch yma i ddarllen yr erthygl llawn](#)

Digwyddiadau Patholeg

Diwrnod Patholeg Rhyngwladol 2024 – Dydd Mercher 6 Tachwedd

Ymunwch â Choleg Brenhinol y Patholegwyr ar-lein ar gyfer eu cynhadledd flynyddol i nodi Diwrnod Rhyngwladol Patholeg. Thema eleni: Cynnydd Ymwrthedd Gwrthficrobaidd Bydeang (AMR). I archebu eich lle ar y gynhadledd rithwir undydd hon, cliciwch yma:

Cliciwch yma i ddarllen yr erthygl
llawn

Eisteddfod 2024, Pontypridd – Dydd Llun 3 Awst – Dydd Sadwrn 10 Awst

Bydd gan gydweithwyr Patholeg stondin yn yr Eisteddfod eleni. I gael rhagor o wybodaeth am yr ŵyl, gan gynnwys tocynnau ac amserlen o ddigwyddiadau, cliciwch ar y ddolen isod:

Cliciwch yma i ddarllen yr erthygl
llawn

Tîm y Rhaglen

Alan Deacon
Adam Christian
Caity Thomas
Kim Williams
Jane Long
Tahir Mohammed
Lauren O’Gorman
Leanne Barker
Joanne Everett

Arweinydd y Rhaglen Batholeg Genedlaethol
Arweinydd Clinigol y Rhaglen Batholeg Genedlaethol
Uwch Reolwr Prosiect, Batholeg Gellog Ddigidol
Uwch Reolwr Prosiect, Batholeg Gellog Ddigidol
Rheolwr Prosiect, Gweithlu, hyfforddiant ac addysg batholeg
Hwylusydd Addysg Ymarfer Patholeg
Deallusrwydd busnes
Uwch Swyddog Cefnogi Prosiectau
Uwch Swyddog Cefnogi Prosiectau

Hwyl Fawr a Dymuniadau Gorau i Lisa McCutcheon

Ar 11 Gorffennaf, ffarweliodd y Rhaglen Batholeg Genedlaethol â Lisa McCutcheon a adawodd ei rôl gyda ni fel Rheolwr Prosiect i gymryd swydd gyda Sgrinio Coluddion Cymru. Dymunwn y gorau i Lisa yn ei swydd newydd a hoffem ddiolch o galon iddi am yr holl waith caled y mae wedi'i wneud i drawsnewid elfen gyfathrebu'r rhaglen.

Cysylltwch â Ni

E-bostiwch NHSWHC.National.Pathology.Programmes@wales.nhs.uk os hoffech:

- gael eich ychwanegu i'r rhestr ddisbarthu ar gyfer ein cylchlythyr
- rhoi adborth neu gyfrannu
- clywed am gyfleoedd i ymgysylltu â gwaith y Rhaglen

Rhifyn nesaf – Hydref 2024

NHS Wales Executive | 1st Floor, River House, Ynys Bridge Court, Gwaelod y Garth | Cardiff, CF15 9SS GB

[Unsubscribe](#) | [Update Profile](#) | [Our Privacy Policy](#) | [Constant Contact Data Notice](#)



Try email marketing for free today!